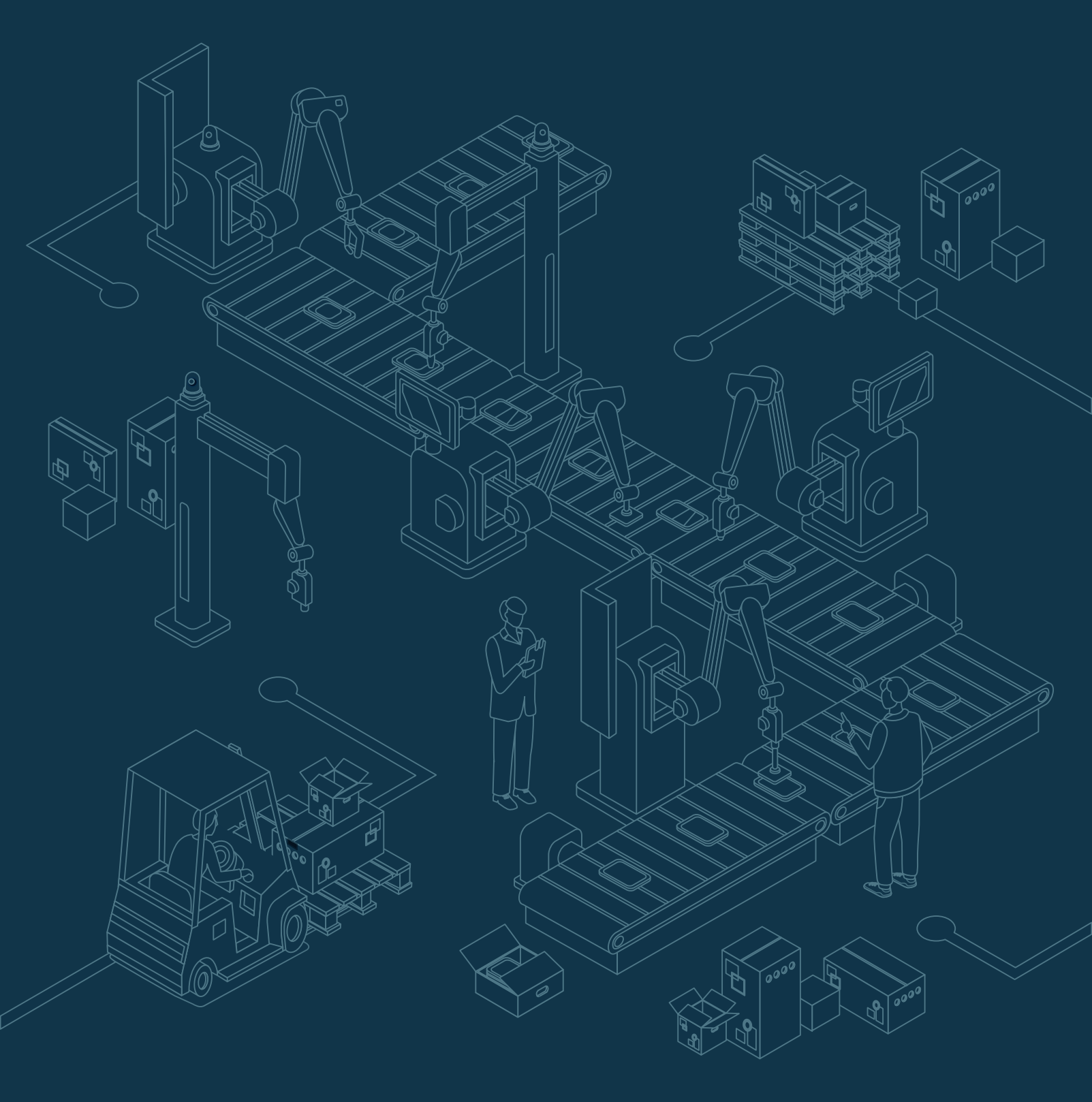


INDUSTRIAL PARK KHMELNYTSKYI





CONTENT

- PRECONDITIONS 2
- INITIATOR OF THE INDUSTRIAL PARK CREATION 4
- GOALS AND OBJECTIVES OF THE INDUSTRIAL PARK CREATION 5
- FUNCTIONAL PURPOSE OF INDUSTRIAL PARK 6
- LOCATION 8
- SIZE OF THE LAND PLOT 10
- PRIORITY AREAS OF ECONOMIC ACTIVITY 12
- TERM OF THE INDUSTRIAL PARK CREATION 13
- REQUIREMENTS FOR INDUSTRIAL PARK PARTICIPANTS 14
- INFRASTRUCTURAL COMMUNICATIONS 16
- ORGANIZATIONAL MODEL
OF THE INDUSTRIAL PARK FUNCTIONING 18
- EXPECTED RESULTS
OF THE INDUSTRIAL PARK FUNCTIONING 20
- GENERAL CHARACTERISTICS
OF THE KHMELNYTSKYI CITY TERRITORIAL COMMUNITY 22
- Economic data 24
- Industrial potential 26
- Labor market 28
- Education 30

PRECONDITIONS

CONCEPT OF THE "KHMELNYTSKYI" INDUSTRIAL PARK DEVELOPED according to:



**The Law of Ukraine
“About Industrial Parks”**



**Resolution of the Cabinet of Ministers of Ukraine dated January 16, 2013, No. 216
“On approval of the Decision-making Procedure for the inclusion of an industrial (manufacturing) park in the Register of industrial (manufacturing) parks”**



**Order of the Cabinet of Ministers of Ukraine dated August 1, 2006, No. 447-p
“On Approval of the Concept of creating industrial (manufacturing) parks”**



Development Strategy of the City of Khmelnytskyi until 2025, approved by the decision of the Khmelnytsky City Council session dated May 31, 2017, No. 2

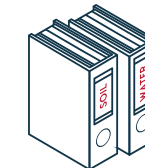
DOCUMENTS DEVELOPED AND OBTAINED:



Program for the creation and development of the "Khmelnytskyi" industrial park

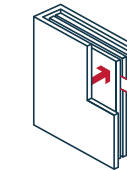


Extract from the State land cadastre about land plot and an extract from the State register of property rights on real estate on registration of ownership

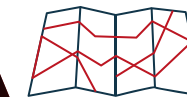


Technical reports on engineering-geological and engineering-geodetic investigations

Technical report on the detailed soil survey of the land plot



Extract from the Register of industrial parks



Detailed plan of the territory for the industrial park



Design and cost documentation (PCD) developed for the construction of engineering and transport infrastructure: “New construction of external water supply and sewage networks”, “New construction of external power supply networks”, “New construction of external gas supply networks”, “Reconstruction of the access road”

INITIATOR OF THE INDUSTRIAL PARK CREATION



Khmelnytskyi City Council

29005, Khmelnytskyi, str. Heroes of Mariupol, 3

rada@khmelnytsky.com

www.khm.gov.ua

GOALS AND OBJECTIVES OF THE INDUSTRIAL PARK CREATION

The objective is to develop mechanisms for the effective implementation of practical steps towards establishing powerful innovation and technology-driven entities in the Khmelnytskyi city territorial community.

This will be achieved through the development of modern specialized infrastructure in the local area, stimulating investment and production activities, and enhancing investment attractiveness.

LOCAL SIGNIFICANCE TASKS GOALS



Providing new opportunities for industrial development in the Khmelnytskyi city territorial community



Enhancing innovative activity



Attracting investments and creating a favorable investment climate



Increasing employment



Strengthening cooperation between enterprises, investors, the city council, and other stakeholders

FUNCTIONAL PURPOSE OF INDUSTRIAL PARK

The functional purpose of the industrial park "Khmelnyskyi" consists of the **dense construction** of the territory of the park **by industries** that correspond to the priority directions of the economic activities, with the arrangement of **modern engineering** and **transport infrastructure**.



LOCATION

EUROPEAN HIGHWAYS

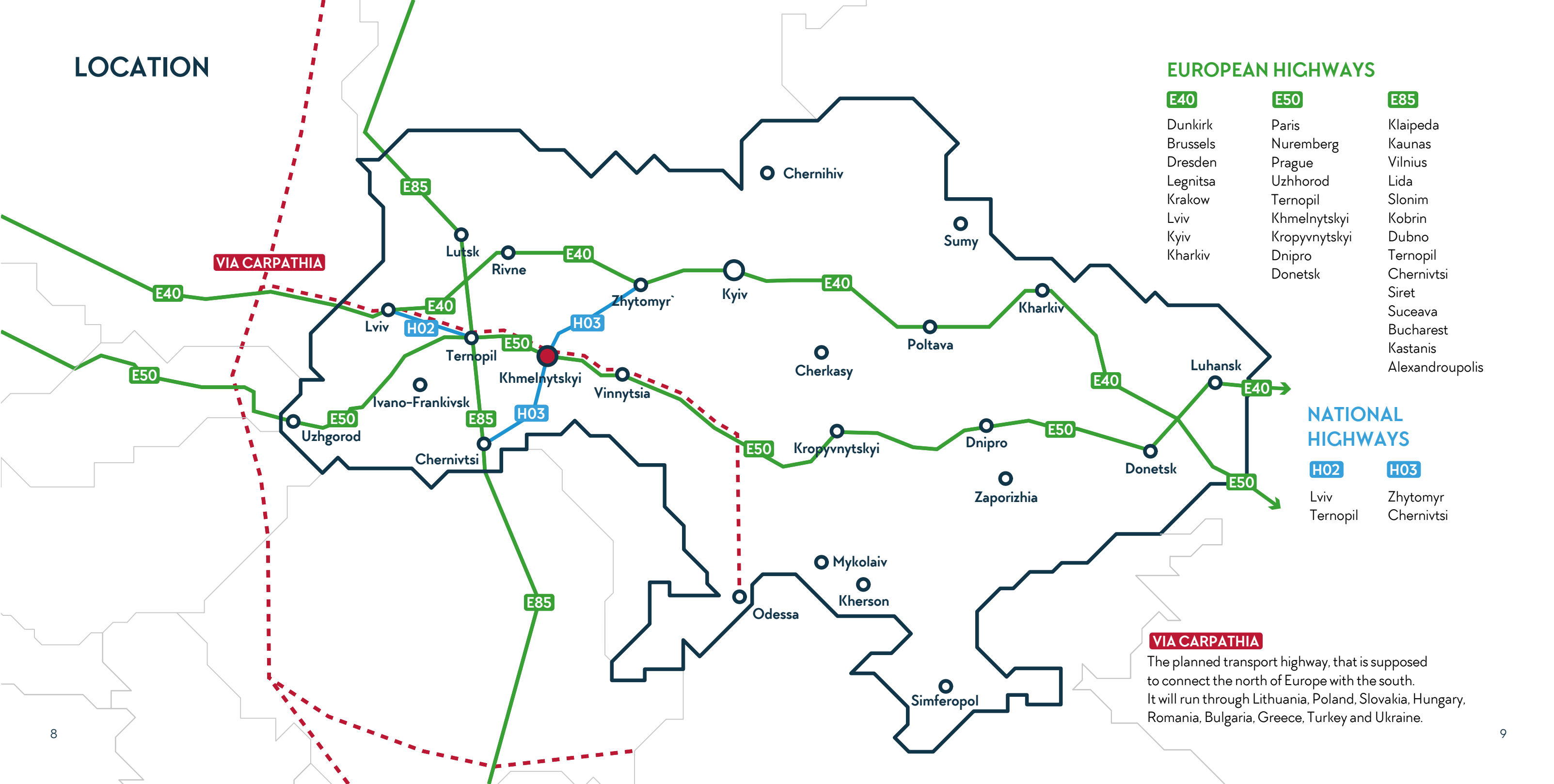
E40	E50	E85
Dunkirk	Paris	Klaipeda
Brussels	Nuremberg	Kaunas
Dresden	Prague	Vilnius
Legnitsa	Uzhhorod	Lida
Krakow	Ternopil	Slonim
Lviv	Khmelnyskyi	Kobrin
Kyiv	Kropyvnytskyi	Dubno
Kharkiv	Dnipro	Ternopil
	Donetsk	Chernivtsi
		Siret
		Suceava
		Bucharest
		Kastanis
		Alexandroupolis

NATIONAL HIGHWAYS

H02	H03
Lviv	Zhytomyr
Ternopil	Chernivtsi

VIA CARPATHIA

The planned transport highway, that is supposed to connect the north of Europe with the south. It will run through Lithuania, Poland, Slovakia, Hungary, Romania, Bulgaria, Greece, Turkey and Ukraine.



SIZE OF THE LAND PLOT

 **LOCATION:**
Khmelnyskyi,
St. Vinnytsia highway, 18

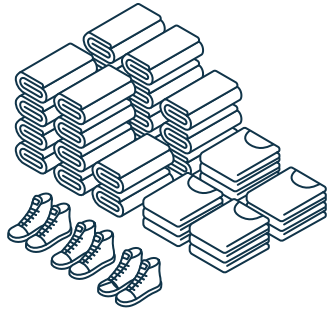
 **TOTAL AREA:**
90,9324 ha

 **INTENDED USE:**
For the industrial park

 **CATEGORY OF LANDS:**
Lands of industry, transport, communication,
energy, defense and other purposes

 **CHARACTERISTICS OF THE PLOT:**
It has a flat surface, free from buildings

PRIORITY AREAS OF ECONOMIC ACTIVITY



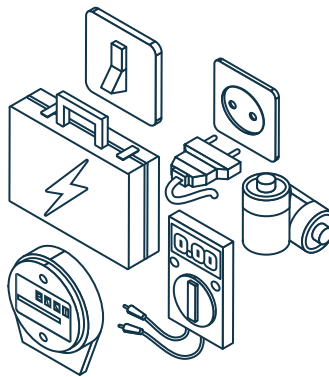
TEXTILE MANUFACTURING

- weaving production
- clothing production
- production of other textile products

MACHINE BUILDING

ELECTRICAL EQUIPMENT MANUFACTURING

- Production of electric motors, generators, transformers, electrical distribution and control equipment
- Production of batteries and accumulators
- Production of wires, cables, and electrical installation devices
- Production of electrical lighting equipment
- Production of household appliances
- Production of other electrical equipment



AGRO-PROCESSING

- Food product manufacturing
- Processing and canning of fruits and vegetables
- Flour and cereal industry production
- Production of other food products

TERM OF THE INDUSTRIAL PARK CREATION



REQUIREMENTS FOR INDUSTRIAL PARK PARTICIPANTS



Creation of a legal entity, separate subdivisions (branches, representative offices)



Registration on the territory Khmelnytskyi urban territorial community



Compliance with the terms of the concluded contracts with the management company



Correspondence of priority areas of economic activity



The minimum guaranteed period of economic activity activity within the industrial park – 5 years



Availability of a strategic plan for the development of the enterprise (minimum for 3 years)



The minimum number of created jobs is 1,000 (for one branch)

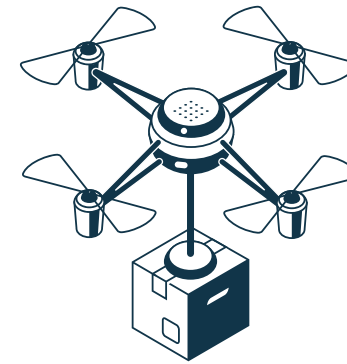


Providing preference in hiring Ukrainian citizens, residents of the Khmelnytskyi urban territorial community



Compliance with the requirements of the current economic, land, tax, labor, and environmental legislation

DESIRED CHARACTERISTICS OF PARTICIPANTS



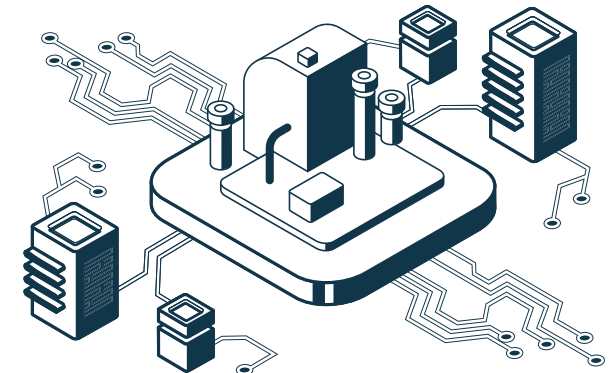
CONSTANT INNOVATION PROCESS



ENGAGEMENT OF HIGHLY QUALIFIED SPECIALISTS

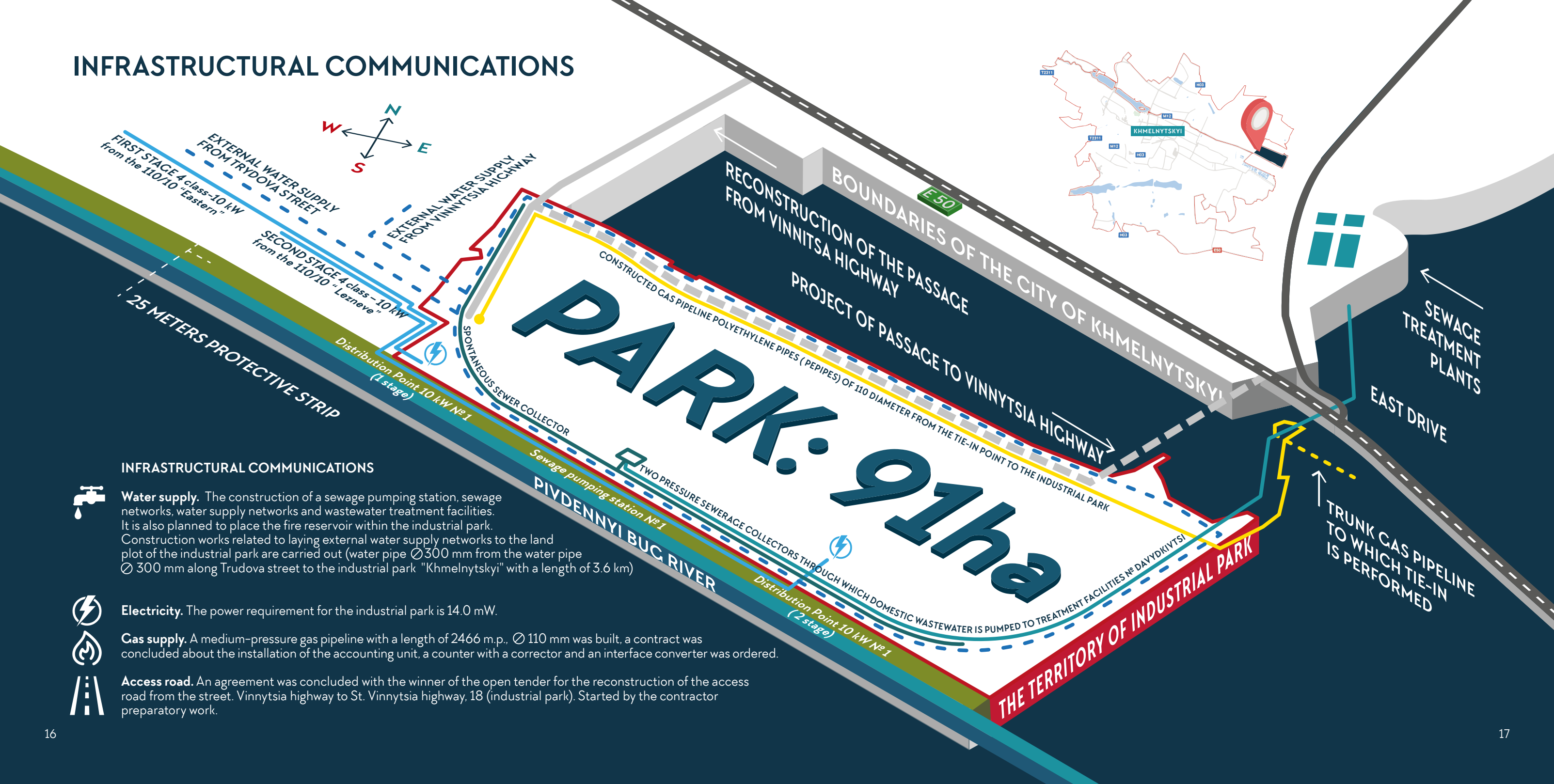


ABILITY TO CREATE NEW MARKETS, NOT JUST USE AVAILABLE OPPORTUNITIES



CREATION OF CLOSED PRODUCTION CYCLES

INFRASTRUCTURAL COMMUNICATIONS



INFRASTRUCTURAL COMMUNICATIONS



Water supply. The construction of a sewage pumping station, sewage networks, water supply networks and wastewater treatment facilities. It is also planned to place the fire reservoir within the industrial park. Construction works related to laying external water supply networks to the land plot of the industrial park are carried out (water pipe $\varnothing 300$ mm from the water pipe $\varnothing 300$ mm along Trudova street to the industrial park "Khmelnytskyi" with a length of 3.6 km)



Electricity. The power requirement for the industrial park is 14.0 mW.

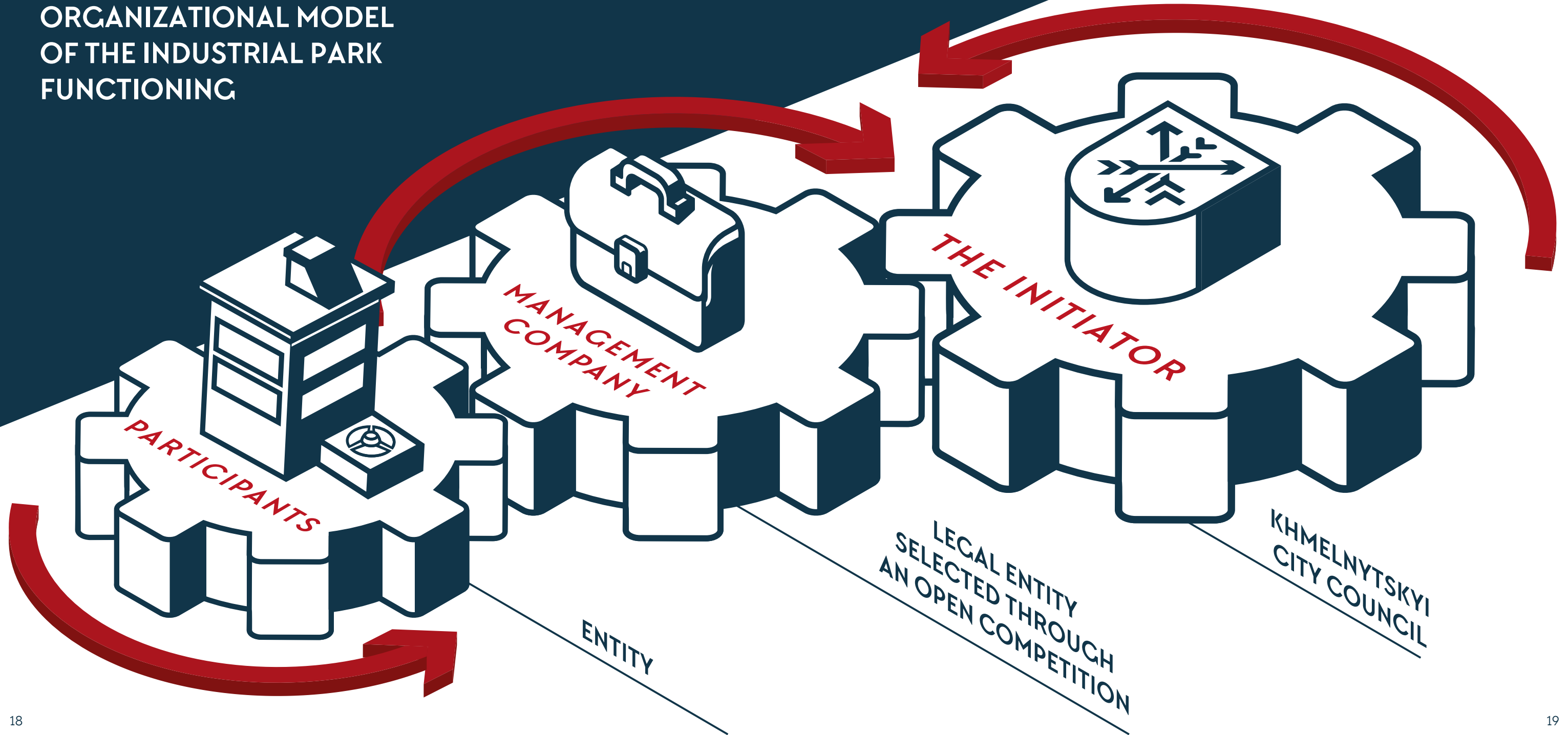


Gas supply. A medium-pressure gas pipeline with a length of 2466 m.p., $\varnothing 110$ mm was built, a contract was concluded about the installation of the accounting unit, a counter with a corrector and an interface converter was ordered.

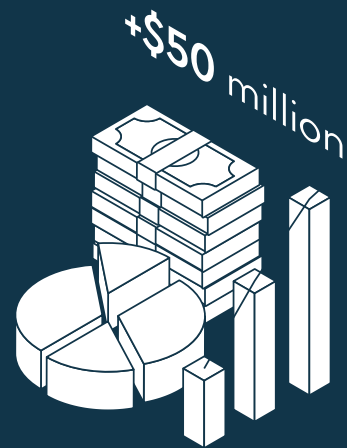


Access road. An agreement was concluded with the winner of the open tender for the reconstruction of the access road from the street. Vinnytsia highway to St. Vinnytsia highway, 18 (industrial park). Started by the contractor preparatory work.

ORGANIZATIONAL MODEL OF THE INDUSTRIAL PARK FUNCTIONING

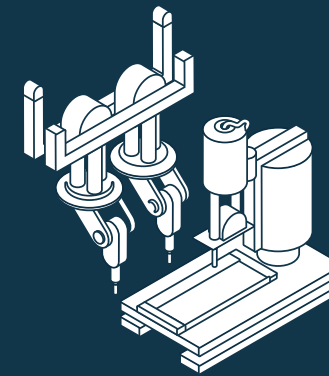


EXPECTED RESULTS OF THE INDUSTRIAL PARK FUNCTIONING



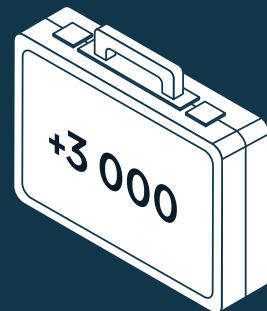
INVESTMENTS

It is anticipated that at least \$50 million in direct investments will be attracted to the community's economy. This will include the import of equipment, machinery, and components not produced in Ukraine.



NEW ENTERPRISES AND INNOVATIVE TECHNOLOGIES

The creation of new enterprises with high potential for innovative development, increased added value, and integrated production chains is anticipated.



JOBS

The creation of over 3,000 new jobs is expected.



BUDGET REVENUE

An increase in local budget revenue by at least 10% is expected.

GENERAL CHARACTERISTICS OF THE KHMELNYTSKYI CITY TERRITORIAL COMMUNITY



The distance is 325 km from Khmelnytskyi to Kyiv by highways.



Less than 20 hours trips to Warsaw, Istanbul, Helsinki, Prague, Berlin, Budapest and Bucharest.



320 km to the checkpoint Krakowiec – Korchova between Ukraine and Poland and the beginning of the longest Polish highway A4.

KEY FACTS

Status	City of regional significance, administrative center Khmelnytskyi region
The total area	492,821 km ²
The number of inhabitants	292,889 thousand people
Accessibility	By train – from Poland, Slovakia, Romania, Bulgaria. By bus – with more than 100 European cities
Number of subjects entrepreneurial activity	30 thousand
Specifics of the economy	Mechanical engineering, light, food, chemical industry and trade
Information about Khmelnytskyi	khm.gov.ua invest.khm.gov.ua



THE SAFEST CITY IN UKRAINE



THE LARGEST TRADE PLATFORM IN WESTERN UKRAINE



THE DRIVER OF THE CITY'S DEVELOPMENT IS SMALL AND MEDIUM ENTERPRISES



INTERSECTION OF MAIN TRANSPORT ROUTES



EFFECTIVE DISTANCES
It takes 20 minutes to travel from one part of the city to another



THE MOST AFFORDABLE HOUSING MARKET IN UKRAINE
Among the regional centers of Western and Central Ukraine

ECONOMIC DATA

Key Economic Data	as of January 1, 2024
Volume of Industrial Production	UAH 25.6 billion
Volume of Wholesale and Retail Turnover	UAH 42.1 billion
Gross Regional Product (GRP) of Khmelnytskyi Region in 2021	UAH 119.876 billion
Consumer Price Index (for the region)	106,3
Number of Registered Business Entities	36 026
Number of Employed Individuals	50,000
Average Monthly Wage	UAH 15,529

>292 889
residents

15th
largest regional center of Ukraine by population

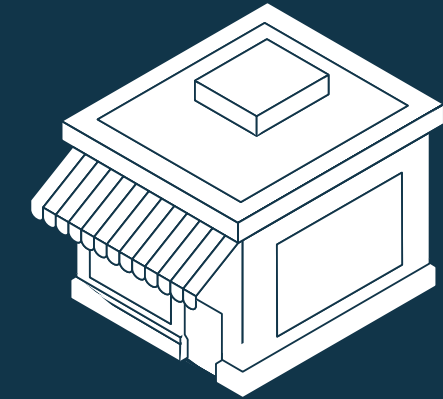
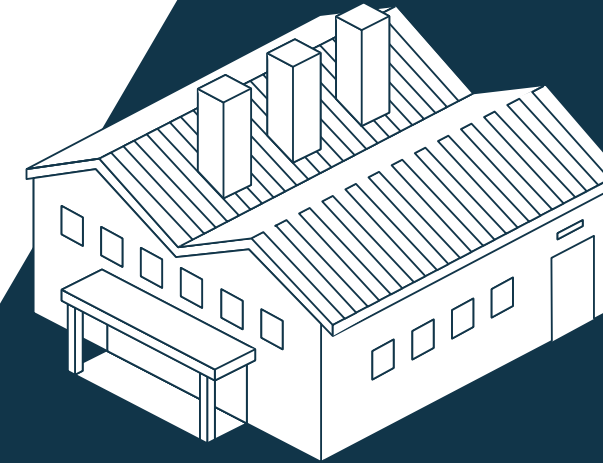
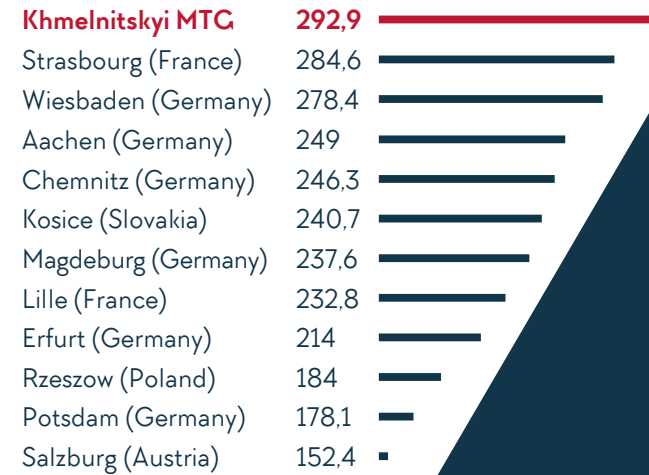
>36 026
registered entities

14 298
legal entities

21 728
individuals – entrepreneurs

Population

compared to other European cities, thousand people



As of **01.01.2024** industrial enterprises of Khmelnytskyi city territorial community sold products worth **25.6 billion UAH (by UAH 5.0 billion more compared to 2022)**, in particular, a significant part of the products of the processing industry were sold for **UAH 14.6 billion** (food production, textile production, clothing production, wood products production, paper production, and printing activities, chemicals and chemical products production, rubber and plastic products production, metallurgical production, machine building, etc.); supply of electricity, steam gas – in the amount of **UAH 9.02 billion**.

The volume of wholesale and retail turnover is growing annually: **from UAH 31.76 billion in 2022 to UAH 42.10 billion in 2023**.

Age distribution of the population

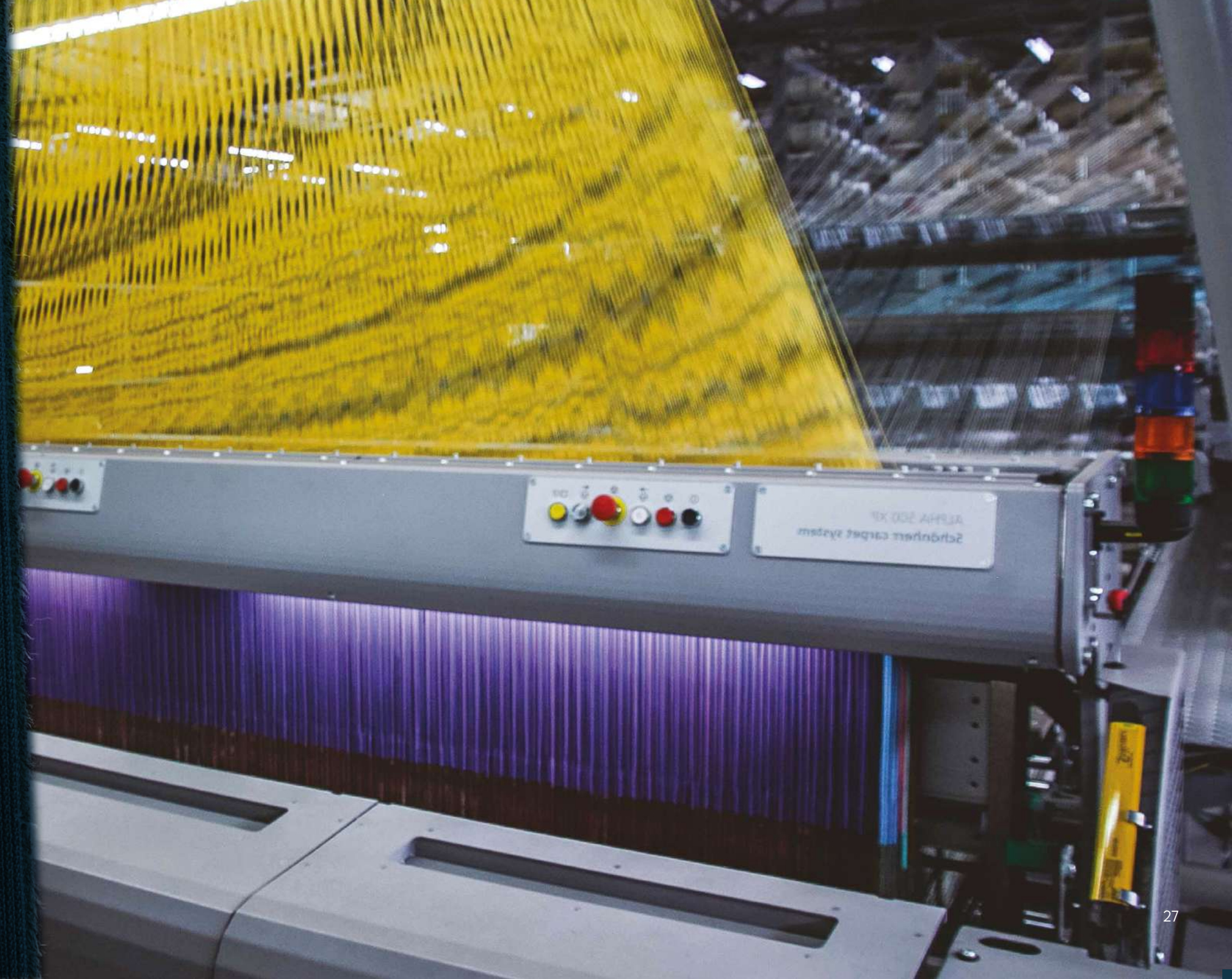


INDUSTRIAL POTENTIAL

The industrial complex of the community is represented by more than 100 enterprises that produce a wide range of products: rubber and plastic products, preforms for production PET bottles, stretch film, additives to building mixtures and other non-metallic mineral products; transformers and transformer substations, thermoplastic machines, and equipment for mini-factories for the production of bricks, special radar and aviation, devices for safe movement on railways, gas and water meters, medical equipment, equipment for dairy industry enterprises, agricultural equipment; food; shoes, clothes, textiles, carpets and carpet products; building materials, building nails, carpentry, slate; finished metal products; corrugated cardboard, paper and cardboard containers, printing products, etc.

The main industrial enterprises of the city: SE "Novator," Ukrelektroaparat " LLC, "Tin-Impex" LLC, PNVP " Korpuscula" , " Neil " LLC, "Khmelnitskhhlib" TD LLC, PrAT "Khmelnitsky Pasta Factory", PJSC "Khmelnitsky Maslosirbaza", LLC " Proskuriv-Agro", PJSC "Khmelnitsky regional brewery", "Litma" LLC, ALC " Khmelnytskzalizobeton," , "Carat" LLC, "Sirius Extruzhen" , LLC " Europe-Export Plus", "Bambi" LLC and others.

The volume of industrial products sold communities by main activities as of 01.01.2024: industry (in particular, food production products, beverages and tobacco products 3.76 billion UAH, textile manufacture, production of clothing, leather, leather goods and others materials UAH 1.69 billion, manufacture of wood products, paper production and printing activities 757.44 million UAH, production of chemicals and chemical products 1.84 billion UAH, production of rubber and plastic products, other non-metallic mineral products 4.28 billion UAH, metallurgical production, production of finished metal products, except for machinery and equipment 865.61 million UAH, mechanical engineering (except for repair and installation of machines and equipment) 1.399 billion UAH); supply of electricity, gas, steam and conditioned air UAH 9.02 bln.



Early 2024 in all areas
of economic community
activities work

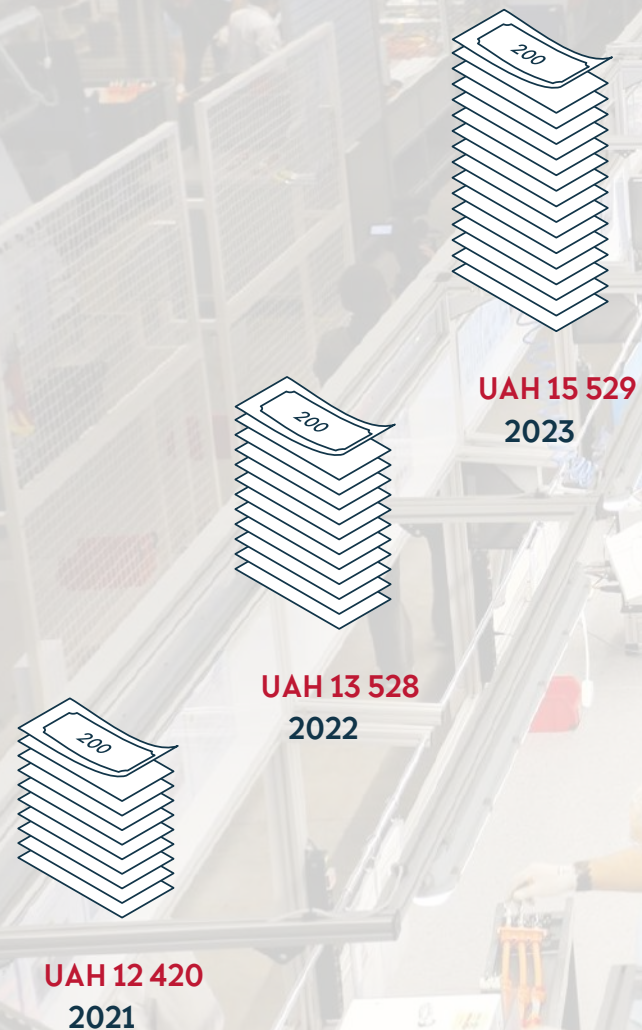
50 000 people

Average monthly
salary of regular
community workers

UAH 15529,0

**DYNAMICS OF THE AVERAGE
MONTHLY WAGES
FULL-TIME EMPLOYEES,%**

(statistics)



EDUCATION

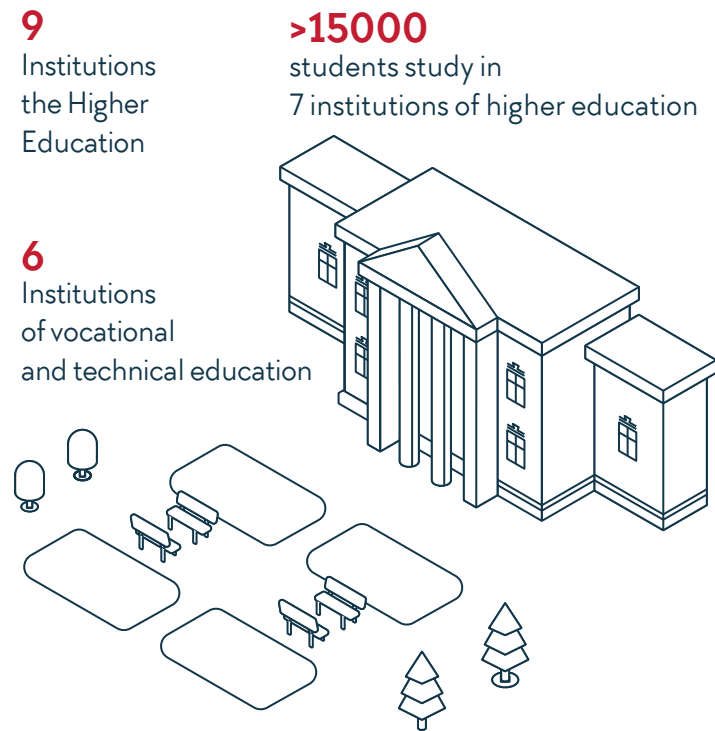
The educational system of the community is represented by a network of preschool educational institutions (65), institutions of general secondary education (56 institutions of various types: lyceums, gymnasiums, specialized secondary schools, educational associations, educational complexes, elementary schools, special schools) and 4 out-of-school educational institutions.

Professional (vocational) and higher education includes an extensive system of educational institutions, that train specialists in various professions in the areas.

SCIENTIFIC POTENTIAL

Khmelnytskyi National University is the largest in the Khmelnytskyi region Higher Education Institution and it is located in the city of Khmelnytskyi.

Training of future specialists are carried out by 8 faculties that unite 42 departments, for 126 educational programs from all levels of higher education: Bachelor, Master, PhDs and ScDs



ON THE BASIS OF THE UNIVERSITY THERE ARE SCIENTIFIC LABORATORIES AND CENTERS, such as:

- Laboratory of cluster researches in Economics
- Laboratory of Progressive methods of strengthening surfaces
- Laboratory for the development of regulatory mechanisms
- Laboratory of dynamics and strength structural and complex technical systems
- Center for Innovation materials strengthening technologies
- Laboratory Mineral Research
- Regional Innovation and Information
- Center for Energy Saving technologies
- Laboratory of Composite materials and Lubricants
- Scientific Testing Experimental Center
- Laboratory of composite materials
- Center of Comparative Professional Pedagogy
- Laboratory of Innovative Radio-Electronic and Measuring Technologies
- Laboratory of Theoretical and Experimental Tribology
- Laboratory of Industrial Chemistry
- Science Park "Innovative Development of Podillya "(project)
- Center SolidWorks
- Podilskyi Scientific Physical and Technological Center
- Sociological Laboratory of KNU

Науковий потенціал міста та нинішні розробки Хмельницького національного університету можуть бути задіяні у проектах інноваційного розвитку та нарощування доданої вартості в економіці міста.



The Economic Department
of Khmelnytskyi City Council

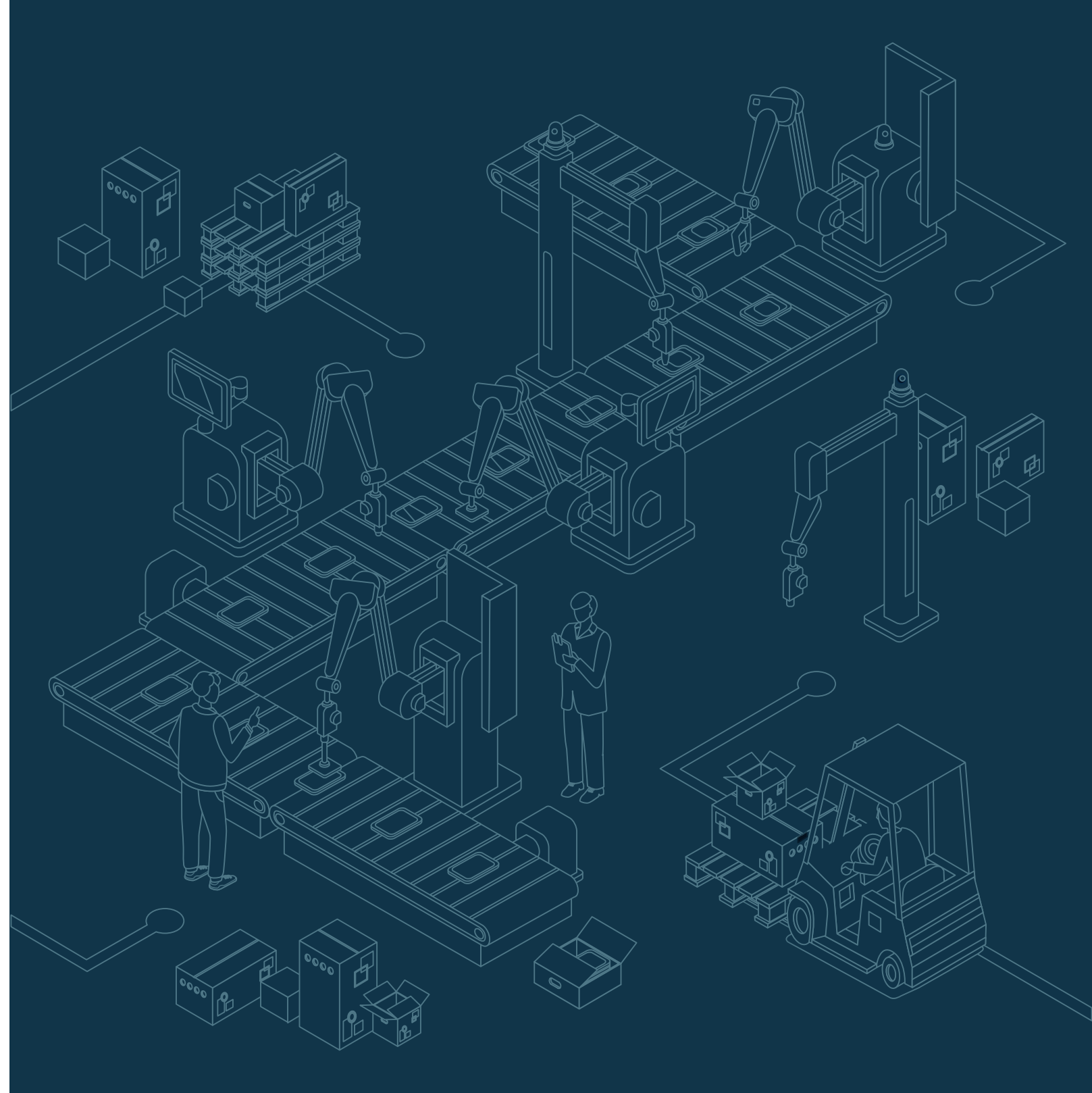
Contact person:

Nataliya SAKHAROVA

Acting Head of Economic Department

+38 (0382) 76-20-29

khm.rada.economy@gmail.com



Інвестуй у  майбутнє.